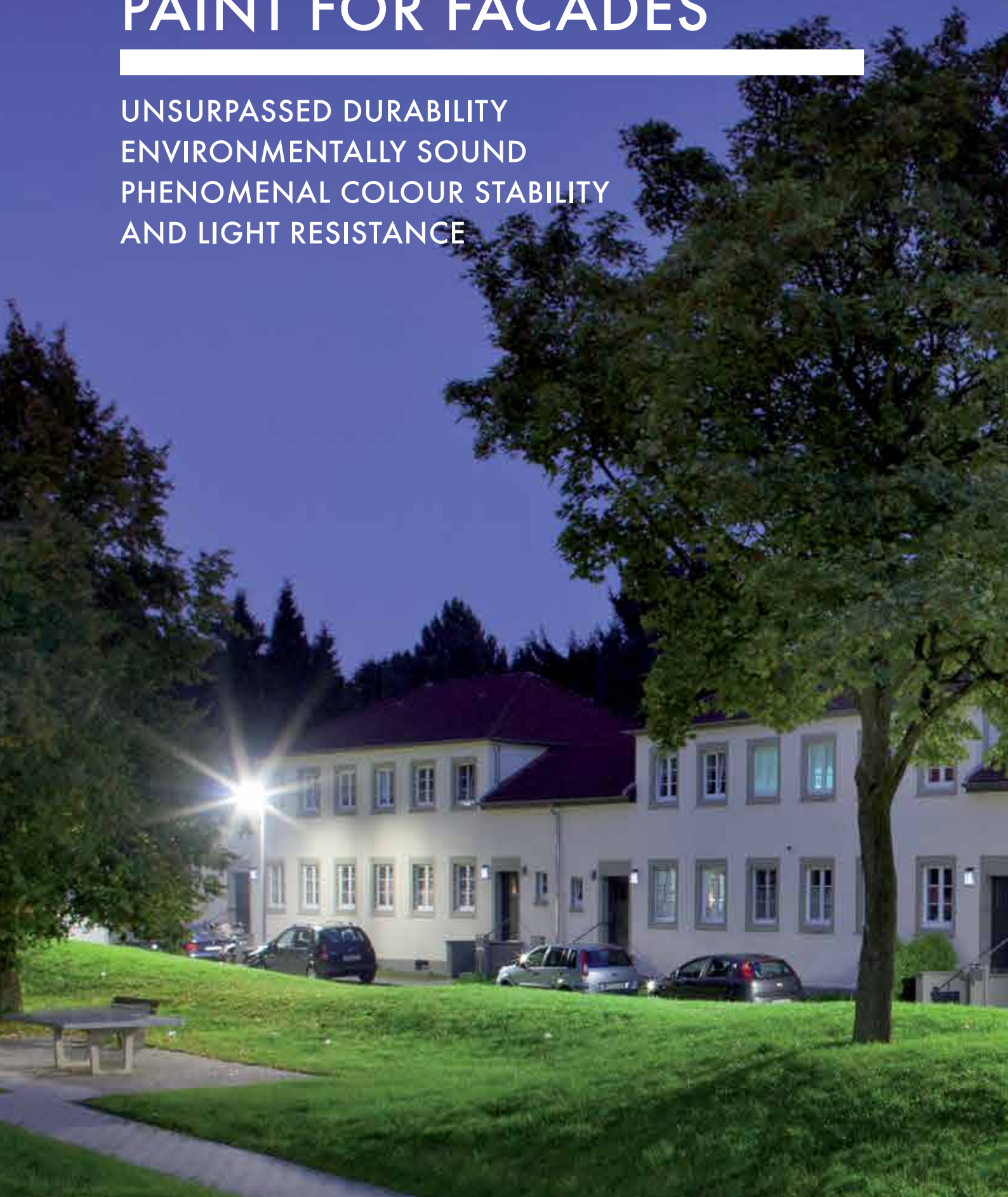


KEIM SILICATE PAINTS

FOR FACADES WITH LASTING VALUE

KEIM – THE BEST PAINT FOR FACADES

UNSURPASSED DURABILITY
ENVIRONMENTALLY SOUND
PHENOMENAL COLOUR STABILITY
AND LIGHT RESISTANCE









IT IS YOUR HOUSE. DO THE RIGHT THING.

Your own home is often your most precious possession. It provides protection, comfort and security. This is why people spend a lot of time, effort and, also money to maintain and design their living space. Colours make a significant contribution to this. Proper paint material is not only facade decoration, it also provides important functions. There are good grounds to be careful when choosing the appropriate paint system.

CHOOSE A NATURAL APPEARANCE

Mineral paints have special matte surfaces and intensive, vibrant colours that last for decades. Plus, KEIM paints remain much longer clean and attractive.

BUY THE MOST DURABLE PAINT

A new coating demands lots of efforts. Normally this is the job of your painter. A scaffolding must be installed, the garden suffers, building waste accumulates et cetera. And too, everything costs money. The differences in quality of paint materials are tremendous. For these reasons the facade paint's durability is a decisive factor.

SUPERIOR PAINT SYSTEM FOR MORE THAN 140 YEARS.

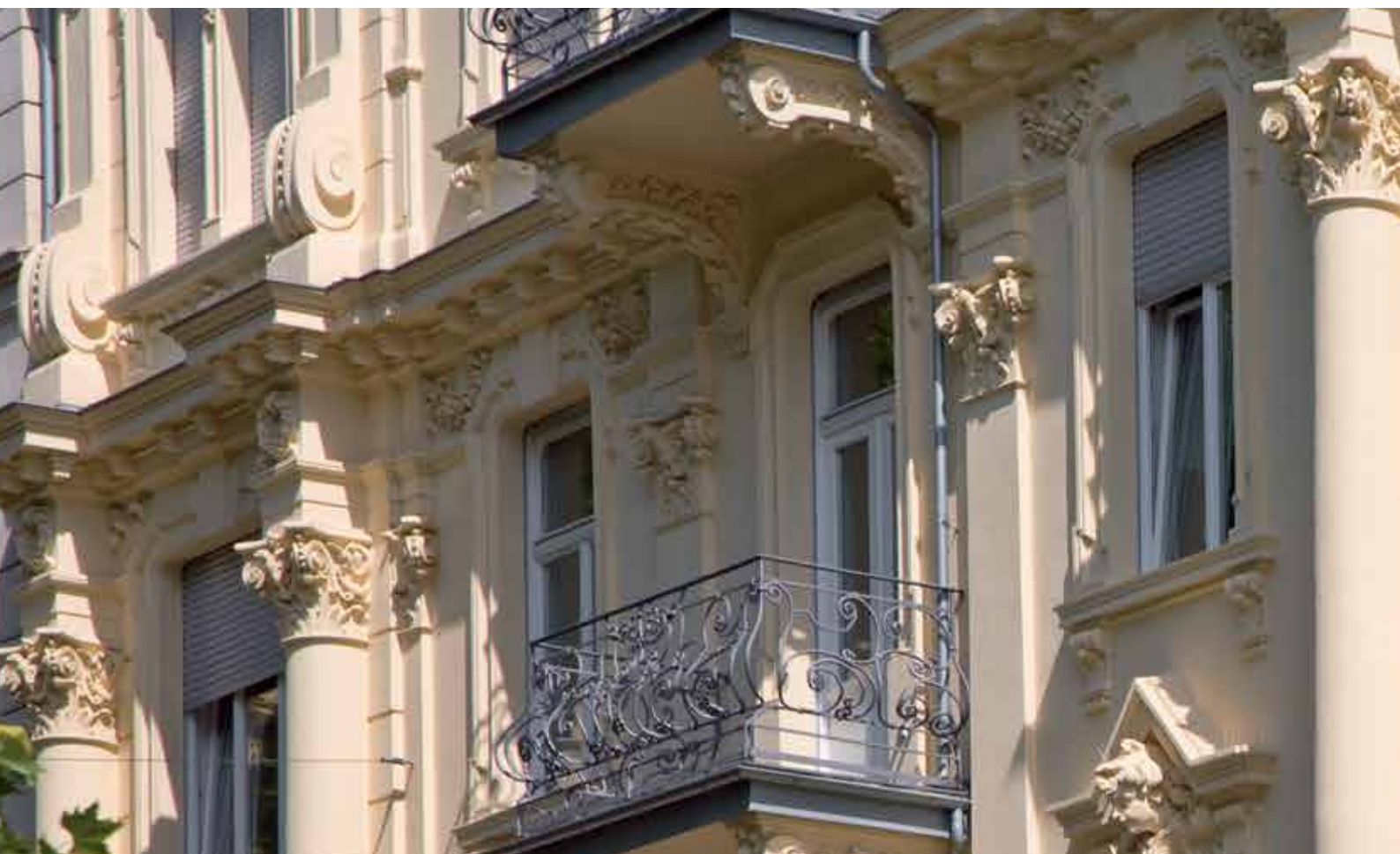
KEIM PAINTS as the inventor of silicate paints has been working on this technology continuously for more than 140 years. Already at the beginning of the 19th century there was a great interest in artfully painted facade decoration in the Italian style initiated by King Ludwig I of Bavaria. But, the harsh climate north of the Alps destroyed such frescos within a short time. A number of scientists experimented with various paint compositions until Adolf Wilhelm Keim finally succeeded in manufacturing for the first time stable paints which he introduced in 1878. From that time to today still exist numerous fantastic facade paintings which have barely lost their original splendour.

THE MINERAL PRINCIPLE

KEIM paints are completely mineral based. Their binding agent „waterglass“ is a silicate that both penetrates and chemically reacts with the mineral substrate like a stone and forms an insoluble, durable bond.

KEIM – HAND CRAFTED MINERAL PAINT PRODUCTS

The composition of paints made of mineral pigments requires fine craftsmanship. Specialists at KEIM take care of that. KEIM colour range comprises a large number of collections: Classic, natural and also intensive and vibrant shades. Each colour shade is individually produced for each individual customer project and for each special colour request.

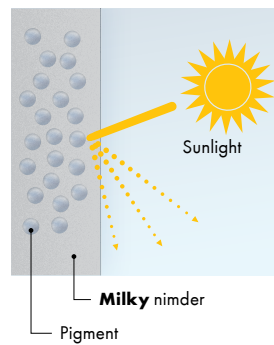


BRILLIANCE THANKS TO THE BINDER

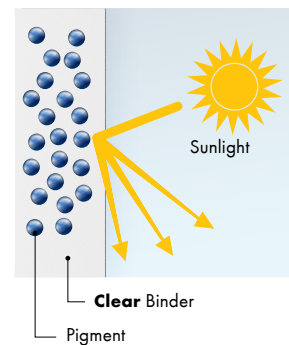
„Waterglass“ is transparent and brings the colour pigments into full play. KEIM paints are formulated with solely natural, mineral pigments. Facades painted with a KEIM paint have a very distinctive deep and special glowing look.

CONVENTIONAL DISPERSION PAINTS

The pigment is wrapped in a milky dispersion binder. The light reflection is dull and dead.

**KEIM SILICATE PAINTS**

The pigment is embedded in a transparent binder. The light reflection is brilliant and underlines the structure.



KEIM FACADE COATINGS LAST 20 YEARS ... AND SOMETIMES EVEN 100.

The colour stability of facade paints is primarily influenced by the kind of pigments used and by the binding agent.

KEIM silicate paints contain solely lightfast, inorganic (=mineral) colour pigments which makes them UV-stable. KEIM's dark and bright shades will not change their colour, even after decades.

However, common paints will suffer from the sun's effects in various ways. This ultraviolet radiation does not only change the colourfulness but also the structure. Exposure to UV light and weather loads of common paints with organic binders such as synthetic resin dispersions or silicone resin emulsions results in micro cracks that will change the light refraction. The colour shade looks greyer and milky. It fades away and the consequences are clearly noticeable after a few years only.

Plus, the binder brittles, the adhesion decreases slowly and moisture can easily enter the facade. For this reason is it quite normal to have to refinish after 10 to 12 years. Layer upon layer are applied during the lifespan of a house.

Mineral binders like potassium waterglass or sol-silicate provide from all binding agents the highest UV-resistance and, moreover, they are absolutely weather-resistant. The binders used by KEIM are hard-wearing as stone and penetrate insolubly into the substrate and the coatings are breathable, moisture-resistant and never come off. This is not only good for the coating but also for your house.



Original coating from the year 1892



KEIM PAINTS PAY OFF.

If a house has been freshly coated it looks attractive and healthy. The advantage of KEIM paints become particularly apparent after having been exposed to the weather for a few years.

THE HOUSE REMAINS DRY

An idea to seal the facade with a synthetic coating seems obvious at first. But it will not function in practice. At the latest when the paint coat has aged for a while, water will enter into the facade, particularly, by wind loads. And it is difficult to come out again through the synthetic coat. Sometime the paint will just flake off or form water pockets.

High water vapour permeability is especially important from the standpoint of building physics. KEIM mineral paints are very water vapour permeable because of their silicate binding agent. So moisture in the building can easily and quickly escape. That means there are no water accumulations behind the coating entailing damages. The facades are particularly protected against frost and water damages.

KEIM paints dry faster. Hardly any dew dampness occurs on the facade – one of the main reasons for algae and fungi growth.

THE HOUSE REMAINS CLEAN

KEIM silicate paints stay clean for a long time. Coating surfaces' susceptibility to soil is influenced by the condensation behaviour and above all by the static charge and thermo-plasticity of the binder. Common exterior paints with organic synthetic resin or silicone resin binders become statically charged by wind friction and so actually attract dirt particles from the air.

At higher temperatures the dirt dust sticks together with the binder. KEIM silicate paints are antistatic and non-thermoplastic because their binder is mineral. That's why KEIM facades remain over time clean and attractive.

NO OTHER COATING IS SO ECONOMICAL

The more durable a paint is, the longer can the owners enjoy their home and, moreover, it is a good reference for the painting company. Coatings with common paints last only for 10 to 12 years, but KEIM facades up to 20 years and oftentimes even longer. KEIM coatings bring a very good return thanks to their excellent durability, ideal structure and long-lasting attractive appearance. No wonder that many public buildings are painted with KEIM.

„I prefer to repaint my house every 20 years instead of every 12 years!“



DESIGN WITH MINERAL PAINTS.

Colours underline the individuality of a building and provide rooms with a certain appeal. Colours promote communication, support orientation, increase productivity and contribute to relaxation and recreation. Colours emphasise architecture, subdivide and arrange facades.

Professional colour designers count on coordinated and elegant compositions with colours that harmonise with the environment and still have their own character. Ideal are mineral paints with a natural appearance. The matte character of KEIM mineral paints in a wide range of shades accentuates the colour quality directly.

DISCOVER DARK COLOUR SHADES

Also dark colours underline the individuality of a house. Provided that this quality is durable. This is another reason to decide for KEIM paints and their unequalled colour stability when it comes especially to dark shades.

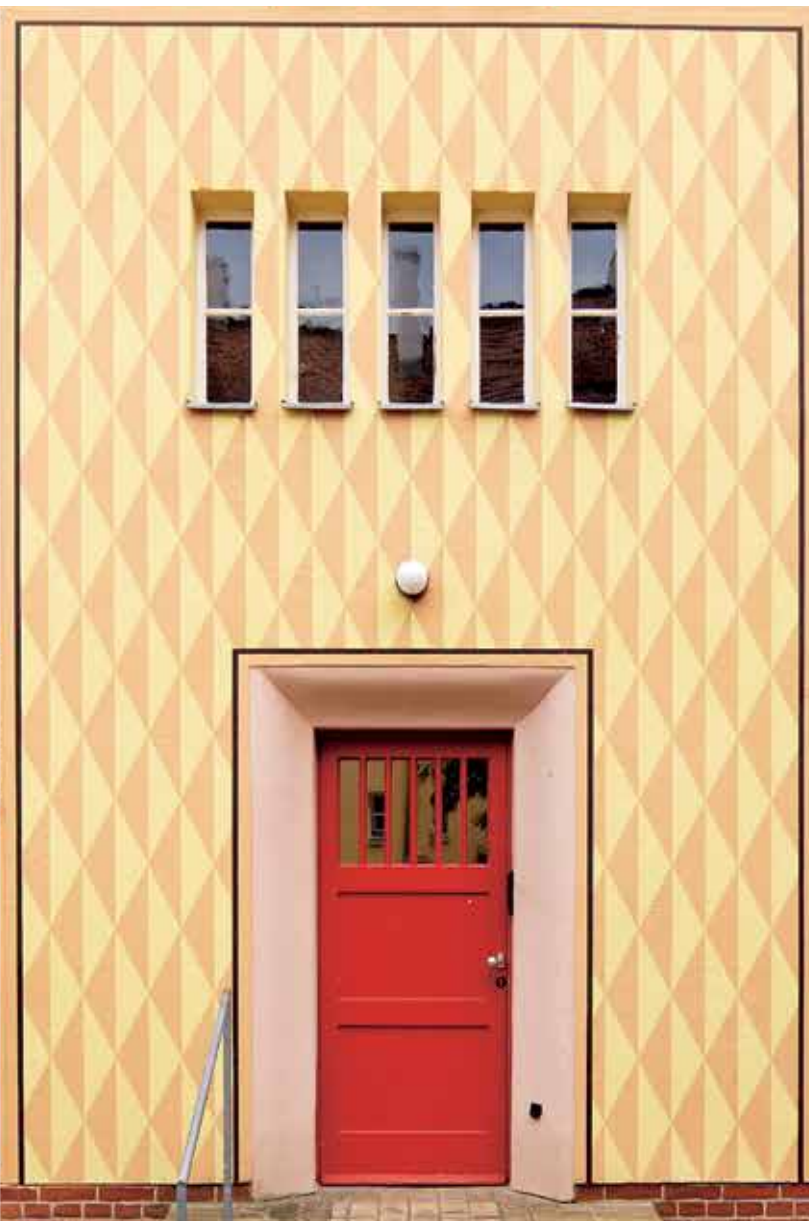


GOLD? WHY NOT!

Gold has long been used in architecture to highlight design elements. KEIM paints in gold are quite easy to apply and can be used for many purposes as decoration elements or, as full-cover wall coating. The effects are stunning.

FACADE PAINTINGS

KEIM is perfect for facade paintings today as it was a hundred years ago. Multi-colour designs turn modern facades into eye-catchers or allow them to fit better into their surroundings.





FOR EACH SUBSTRATE THE RIGHT PRODUCT.

The product range of KEIM facade paints is multifaceted for the requirements of classic and modern architecture. It depends on the substrate and on the customer's taste which paint material would be best. All KEIM paints are highly durable and environmentally sound.

KEIM PURKRISTALAT®. PURE CRAFTSMANSHIP.

KEIM Purkristalat is the "Mother of Silicate Paints". This paint is mixed from two components according to the traditional procedure and requires quite a portion of expertise from the performing painter plus, a solid mineral render substrate. Application is performed with a paint brush. Reward for all the hard work are facades that last for decades and develop their venerable patina over time.

KEIM GRANITAL®. PREMIUM QUALITY FOR MINERAL SUBSTRATES.

KEIM Granital is a top-class, ready-to-use, silicate paint. Proven for decades and available in a wide range of colour shades. Suitable for mineral substrates providing an excellent weather protection.

KEIM Granital coatings last normally twice as long as dispersion paints and they are particularly recommended for prestigious and historic structures.



KEIM SOLDALIT®. THE ALL-ROUNDER – UNEQUALLED COLOUR-STABLE AND DURABLE.

KEIM Soldalit sets standards in the field of modern facade coating for more than 10 years. Suitable for any substrate: old or new, mineral or organic. KEIM Soldalit combines optimal facade protection with longevity and colour permanence that is typical for silicate paints.

KEIM TWINSTAR® FIRST 2 IN 1 COATING FOR FACADES.

KEIM Twinstar is the new innovative facade paint with a dual benefit. This 2 in 1 coating allows the application of base and top coat together, wet on wet and with no drying time in between. KEIM Twinstar is the optimal coating for a sustainable, biocide-free facade protection.

KEIM VERAMIN® - THE STANDARD QUALITY FOR MINERAL SUBSTRATES.

KEIM Veramin offers the best possible protection on mineral substrates in genuine KEIM quality. Whether for terraced houses, detached houses or apartment buildings – KEIM Veramin is the perfect painting material for every building. In addition to qualitative arguments, the excellent price-performance ratio speaks for KEIM Veramin.

THE BEAUTY OF CONCRETE.

Concrete is one of the most versatile building materials there is and it is most widely used. Concrete has its own, individual aesthetics: Classic grey fair-faced concrete surfaces or, painted opaque with vibrant colours or, in glaze painting technique showing a transparent look. Concrete allows a fascinating wide range of design options.

The surfaces are always mineral matte, just like concrete. And with KEIM mineral concrete systems the typical surface appearance of concrete is protected from weather influences and preserved. KEIM Concretal und KEIM Concretal-Lasur retain the concrete texture and the natural look. The coating is highly UV-resistant, silicifies as soon as applied with the substrate and improves the structure of the material. KEIM Concretal products are perfect to eliminate surface defects and, to provide the concrete with a vibrant colour design and to preserve the texture.





WOOD AS DURABLE AS STONE.

Wooden facades require regular maintenance. A new coating is needed on average every five to seven years. Each time the preparation requires more effort and becomes more expensive.

During years of research KEIM developed and patented the first silicate based wood coating system to make wooden facades as durable as mineral substrates: KEIM Lignosil system. This unique matte appearance underlines the character of wood. KEIM Lignosil coatings last twice as long as common wood paints. Even when it is time for a refinish the wood is in such good condition that preparation works are scarcely needed. Just a new coating

KEIM'S FOCUS IS ON GOOD CRAFTSMANSHIP.



WE ARE PARTNER

KEIM works very close with specialist painting companies and architects to achieve the best possible results for your house. KEIM paints are very efficient and highly colour stable. This unique durability is obtained by selecting the proper material and a correct application.

This applies to the raw material and to the finished product. KEIM would be pleased to provide you with qualified painters in regard to the design and protection of your facades.

KEIM FACADE PAINTS IN A NUTSHELL

- Very attractive, mineral matte surfaces
- Unequalled durability and economy
- Highest water vapour permeability and ideal moisture balance for long-lasting clean and attractive facades
- Binder and pigments are UV-stable for maximal colour stability
- Incombustible paints
- Biocide-free and thus environmentally sound

„Quality, responsibility and service are not just words for us, but company philosophy.“





KEIMFARBEN GMBH

Keimstraße 16 / 86420 Diedorf / Tel. +49 821 4802-0 / Fax +49 821 4802-210
Frederik-Ipsen-Straße 6 / 15926 Luckau / Tel. +49 35456 676-0 / Fax +49 35456 676-38
www.keim.com / info@keimfarben.de

KEIM. COLOURS FOR EVER.